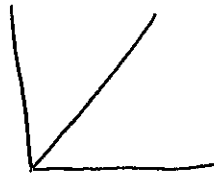


Notes 10/28 - Distance - Time Graphs

■ Increasing Distance



constant speed

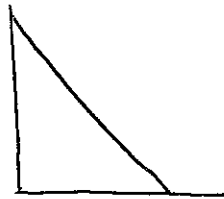


speeding up

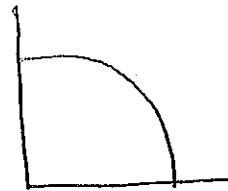


slowing down

■ Decreasing Distance



constant speed

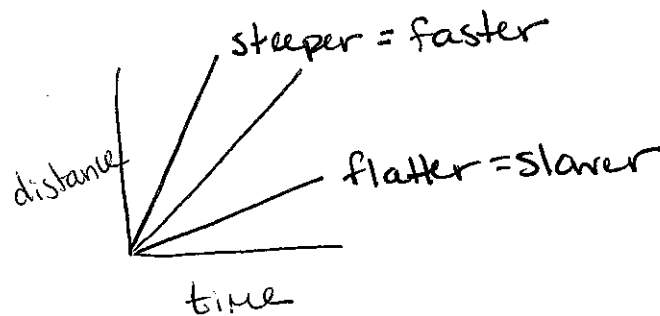


speeding up

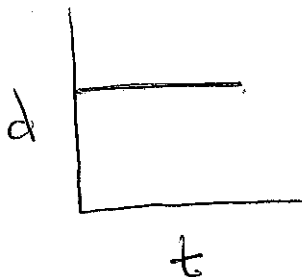


slowing down

$$\text{Speed} = \frac{\Delta \text{distance}}{\Delta \text{time}} \Rightarrow \text{slope of the line}$$



Horizontal Lines



speed = 0
(stopped)

Vertical Lines



↳ impossible

Can't be in two places at once
(can't travel any distance in zero time)